



SkinSystem[®]
Cosmetics

Professional Skin-Care

Specific Professional Treatments
for face and body care.

Catalogue 2022

■ ■ Made in ITALY

Take care of yourself really

Why a kit?

- Focused Treatments

Professional Products in synergy to
increase their effectiveness

- Studied Protocols

and verified in beauty centers to
maximize their effects



Face

- P_05 - Intensive Cleansing Treatment
- P_06 - Hyaluronic Acid Intensive Treatment
- P_08 - Argan Bio Intensive Treatment
- P_09 - Goji Berries Intensive Treatment
- P_12 - Intensive Uniforming Facial Treatment and Anti Spots

Index

Face Body

- P_16 - Radiofrequency Line
Oxygen Therapy
and Ultrasounds

Body

- P_20 - OC Line
- P_24 - Draining Toning and
Relieving Treatment
- P_28 - Maternity Line



Face Intensive Treatments



Video and instructions
for use available

Specific treatments kit for the treatment of face neck and décolleté skin based on 100% natural active phytotherapeutic concentrates. Without paraffins petrolatum parabens nickel and other heavy metals.



Cleansing Intensive Treatment

SC Skin Cleansing



ELASTICIZING AND LIGHTING UP CLEANSING

Specific treatment for accurate and deep cleansing of face, neck and décolleté skin, enriched with precious antioxidant, emollient, moisturizing and nourishing agents, highly concentrated, that activate the microcirculation and stimulate the skin to self-regenerate and strengthen from the inside, reconstituting its normal hydrolipid barrier.

Day after day the skin recovers elasticity, tone, brightness and radiance.

Proper cleansing of face and neck skin is a gesture of daily beauty essential to fight the first signs of skin aging.

It helps to keep the skin supple and radiant and facilitates the absorption of the active ingredients in beauty products applied afterwards.

Every morning it is necessary to remove the dead cells and the sebum produced during the night phase of epidermic regeneration and in the evening it is a good rule to "purify" the skin by removing smog, fine dust, make-up and any other impurities deposited during the day.

Skin System SC INTENSIVE TREATMENT is dedicated to all women who wish to have a pure supple and radiant skin.

Contents:

- 1 Multivitamin Cleansing Milk Collagen Vit.E 250 ml.
- 1 Multivitamin Toner Marigold Vit.E 250 ml.
- 1 Acid Fruit Face Peeling Fruit Acids, Jojoba Oil, Allantoin, Apricot Kernels 150 ml.



Video and instructions
for use available

Hyaluronic Acid Kit Intensive Treatment



HA *Hyaluronic Acid*

ANTI-AGE VOLUMIZING

It fills the wrinkles and restores the volumes of the face giving a younger and rested look. Skin aging does not only cause the appearance of wrinkles and loss of tone, but also implies a loss of face volumes.

As time goes on, the amount of Hyaluronic Acid present in the dermis, which contributes to supporting the synthesis of collagen and keep skin hydrated, decreases progressively emptying cheeks, cheekbones and oval face.

SkinSystem HA INTENSIVE TREATMENT is dedicated maintain and all those women over 25 years who want to maintain and recover the compactness and lost volumes.

Contents:

- 1 Oxy-Age phial 10 ml
- 1 Soft Surgery Filler syringe
- 10 Hyaluronic Acid Filler Face Mask 10 ml
- 1 Hyaluronic Concentrate 30 ml
- 1 Hyaluronic Acid Face Cream 50 ml



Video and instructions
for use available

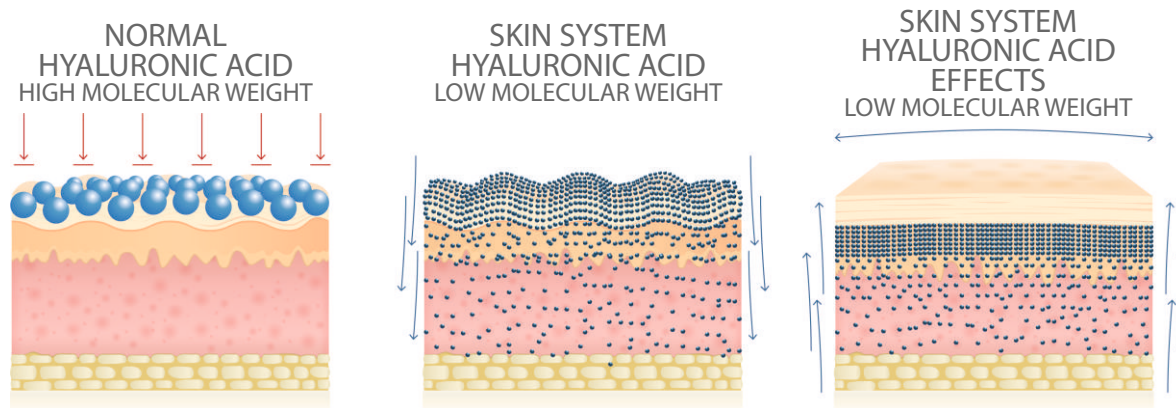
Hyaluronic Acid

with low molecular weight!

OUR HYALURONIC ACID IS DIFFERENT BECAUSE...

The hyaluronic acid present on the market, due to its molecular large size, does not reach the depth of the dermis but remains on the surface offering a sensation of only apparent hydration.

The SkinSystem laboratories use new molecules of hydrolyzed hyaluronic acid, lightened in the structure, which easily penetrate the superficial layers of the dermis reaching up to the deepest ones thus ensuring a true hydration and giving turgidity and brightness.



Argan Bio Kit Intensive Treatment



AB *Argan Bio*



ANTI-AGE REGENERATING AND SEBO REGULATOR

Specific treatment for the face, neck and décolleté based on organic Argan Oil, enriched with Tocopherol and Retinol. Antioxidant, emollient and highly elasticizing, it re-activates vital functions of the epidermal cells stimulating them in the production of collagen.

Day after day the skin is renewed and retrieves tone brightness and splendour. Used pure on the skin regulates sebum production, contrasts acneic skin, scars and stains.

SkinSystem AB INTENSIVE TREATMENT is dedicated to all women who want to prevent and counteract the effects of time and excess of sebum, maintaining and / or retrieving elasticity, smoothness and splendour.

Contents:

- 1 Argan-Bio Oil Pure Concentrate 30 ml
- 1 Argan-Bio Face Mask 100 ml
- 1 Argan-Bio Face Cream 50 ml

Goji Berries Kit

Intensive Treatment

GB Goji Berries



ANTI-AGE RECOMPACTING AND LIGHTING

Stimulates the cellular metabolism, restoring natural youth of the skin. Specific treatment for face, neck and décolleté based on Himalayan Goji Berries, considered the most powerful natural antioxidant in the world. Enriched with Tocopherol and actives at high concentration, stimulates cellular metabolism by fighting free radicals and consequent skin aging and gives the skin everything is necessary to be protected, recovered and renewed from within. It fills the little wrinkles, relaxes and replenishes the facial features, attenuates the sun spots. Day after day the skin recovers elasticity, tone, brightness and splendour.

SkinSystem BG Intensive Treatment is dedicated to all women over 30 years who wish to recover and maintain a natural youth.

Contents:

- 1 Performing Anti-Aging Face Cream 50 ml
- 1 Anti-Aging Concentrate Eyes and Lips 30 ml
- 1 Performing Anti-Aging Face Mask 250 ml



Face Intensive Kit Protocols

Hyaluronic kit Acid Intensive Treatment



PRODUCT	INSTRUCTIONS FOR USE
CLEANSING INTENSIVE TREATMENT	Thoroughly cleanse the skin of the face, neck and décolleté with the SkinSystem INTENSIVE CLEANSING TREATMENT.
OXY'AGE	Apply a few drops of OXY'AGE on the skin (a low molecular weight product that can also be used with an airbrush).
SOFT SURGERY FILLER	Apply the SOFT SURGERY FILLER on the frontal area following the wrinkles of expression, eye contour and nose labial furrow, performing a connective massage. (The product can be used as a conductive cream with diathermic equipment such as radio frequency).
FILLER FACE MASK Hyaluronic Acid	Spread on the face the HYALURONIC ACID performing mask and leave for at least 15 minutes. Remove the performing mask and absorb the product by performing a revitalizing massage.

HOME TREATMENT

Products: HYALURONIC CONCENTRATE, FACE CREAM HYALURONIC ACID

Directions for use: Apply a few drops of HYALURONIC CONCENTRATE on the cleansed skin in the morning and in the evening and, after its rapid absorption, proceed with the application of FACE CREAM Hyaluronic Acid and let it absorb with a gentle massage.

Goji Berries kit Intensive Treatment



PRODUCT	INSTRUCTIONS FOR USE
CLEANSING INTENSIVE TREATMENT	Thoroughly cleanse the skin of the face, neck and décolleté with the SkinSystem INTENSIVE CLEANSING TREATMENT.
GOJI BERRIES PERFORMING ANTI-AGING FACE MASK	Spread the PERFORMING ANTI-AGING FACE MASK with Goji berries on the face and leave for at least 15 minutes. Remove the mask and apply the Goji Berries ANTI-AGING FACE CREAM on the face and the Goji Berries ANTI-AGING CONCENTRATE EYES AND LIPS on the eye and lip contour.
GOJI BERRIES PERFORMING ANTI-AGING FACE CREAM GOJI BERRIES ANTI-AGING CONCENTRATE EYES AND LIPS	Make the product absorb by performing a revitalizing massage. N.B. : the Eye and Lip Concentrate can also be used as a beauty mask for eyes and lips applying a more generous layer on the parts to be treated and leaving it to act for at least 15 minutes. Massage any residues.

HOME TREATMENT

Product: PERFORMING ANTI-AGING FACE CREAM with Goji berries, ANTI-AGING CONCENTRATE EYES AND LIPS with Goji berries, PERFORMING ANTI-AGING FACE MASK with Goji berries.

Indications for use morning and evening: Apply the PERFORMING ANTI-AGING FACE CREAM with the Goji berries on the cleansed skin morning and evening and the ANTI-AGING CONCENTRATE EYES AND LIPS with Goji berries on the eye and lip contour and absorb with a light massage.

Directions for use once or twice a week: Apply the PERFORMING MASK with Goji Berries and leave for at least 15 minutes. Remove the mask and apply the ANTI-AGING FACE CREAM with Goji Berries on the face and the ANTI-AGING CONCENTRATE EYES AND LIPS with Goji Berries on the eye and lip contours.

Face Intensive Kit Protocols

Cleansing kit Intensive Treatment



PRODUCT	INSTRUCTIONS FOR USE
MULTIVITAMIN CLEANSING MILK Collagen, Vitamin E MULTIVITAMIN TONER Marigold, Vitamin E	Apply the MULTIVITAMIN CLEANSING MILK to the face neck and décolleté and massage gently with circular movements. Remove with sponges moistened with water and a few drops of MULTIVITAMIN TONER. Then tap the skin with a few drops of MULTIVITAMIN TONER until it is completely absorbed.
ACID FRUIT FACE PEELING Fruit Acids, Jojoba Oil, Allantoin Apricot Kernels	Apply a small amount of FACE PEELING ACID FRUIT to the face, neck and décolleté and massage with gentle circular movements. Remove any residual product with a sponge moistened with water and a few drops of MULTIVITAMIN TONER.

HOME TREATMENT

Products: MULTIVITAMIN CLEANSING MILK Collagen Vit.E, MULTIVITAMIN TONER, Marigold Vit.E, FACE PEELING ACID FRUIT Fruit Acids, Jojoba Oil, Allantoin Apricot Kernels.

Directions for use morning and evening: Apply MULTIVITAMIN CLEANSING MILK on the face neck and décolleté and massage gently with circular movements. Remove with sponges moistened with water and a few drops of MULTIVITAMIN TONER. Then tap the skin with a few drops of MULTIVITAMIN TONER until completely absorbed.

Directions of use once or twice a week: Apply the MULTIVITAMIN CLEANSING MILK on the face neck and décolleté and massage gently with circular movements. Remove with sponges moistened with water and a few drops of MULTIVITAMIN TONER. Then tap the skin with a few drops of MULTIVITAMIN TONER until it is completely absorbed. Apply a small amount of FACE PEELING ACID FRUIT on the face, neck and décolleté and massage with gentle circular movements. Remove any residual product with a sponge moistened with water and a few drops of MULTIVITAMIN TONER.

Argan kit Bio Intensive Treatment



PRODUCT	INSTRUCTIONS FOR USE
CLEANSING INTENSIVE TREATMENT	Thoroughly cleanse the skin of the face, neck and décolleté with the SkinSystem INTENSIVE CLEANSING TREATMENT.
ARGAN-BIO OIL PURE CONCENTRATE	Apply a few drops of ARGAN-BIO OIL PURE CONCENTRATE to the skin.
ARGAN-BIO FACE MASK	Spread the ARGAN-BIO FACE MASK on the face and leave for at least 15 minutes.
ARGAN-BIO FACE CREAM	Remove the mask and apply the ARGAN-BIO FACE CREAM and absorb the product by performing a revitalizing massage.

HOME TREATMENT

Product: ARGAN-BIO OIL PURE CONCENTRATE, ARGAN-BIO FACE MASK, ARGAN-BIO FACE CREAM.

Directions for use morning and evening: Apply a few drops of ARGAN-BIO OIL PURE CONCENTRATE to the cleansed skin in the morning and in the evening and, after its rapid absorption, proceed with the application of the ARGAN BIO FACE CREAM and let absorb with a gentle massage.

In cases of Acne-prone skin: apply the ARGAN-BIO OIL PURE CONCENTRATE on the pimples and leave to work overnight.

Directions for use once or twice a week: Apply a few drops of ARGAN-BIO OIL PURE CONCENTRATE to the skin. Spread the ARGAN BIO FACE MASK on the face and leave for at least 15 minutes. Remove the mask and apply the ARGAN-BIO FACE CREAM and absorb the product by performing a revitalizing massage.



RADIANCE PERFECT SKIN

INTENSIVE UNIFORMING FACIAL TREATMENT AND ANTI SPOTS

RADIANCE PERFECT SKIN

SKINSYSTEM LABORATORIES, IN COLLABORATION WITH EXPERT COSMETOLOGISTS, HAVE STUDIED AN INNOVATIVE TREATMENT MADE WITH THE LATEST-GENERATION PATENTED ACTIVE INGREDIENTS TO PROTECT THE SKIN FROM THE APPEARANCE OF SPOTS AND IT PREVENTS DISCOLORATION.

AN UNPRECEDENTED EFFECT ON THE SKIN THAT WILL APPEAR EXTRAORDINARILY LUMINOUS, UNIFORM AND SMOOTH.



BEFORE CARRYING OUT THE TREATMENT, CAREFULLY SANITIZE YOUR HANDS AND SANITIZE ALL THE MATERIAL TO BE USED, CUSTOMIZING IT FOR THE CUSTOMER (ACCORDING TO CURRENT COVID-19 ITALIAN REGULATION)

PREPARATORY PHASE

CONTACT WITH THE CUSTOMER

PERFORM DEEP LYMPHATIC OPENING MOVEMENTS TO FACILITATE THE DIRECTION OF THE LYMPH DURING THE TREATMENT IN THE CABIN (TERMINUS, OCCIPUT, PROFUNDUS, AXILLARY)

STEP 1: CLEANSING

DEEP AND FUNCTIONAL CLEANSING OF THE FACE. STIMULATION OF MICROCIRCULATION AND TISSUE OXYGENATION. THE SKIN WILL BE IMMEDIATELY SMOOTH AND SOFT TO THE TOUCH, READY TO RECEIVE THE NEXT PHASE OF THE TREATMENT.

PRODUCTS TO USE: PURIFYING CREAMY MILK 500 ML, PERFECT TONER 500 ML

PRODUCTS TO USE	QUANTITY	HOW TO USE	APPLICATION TIME
PURIFYING CREAMY MILK	4 Doses	Cleanse face, neck and décolleté with Purifying Creamy Milk, applying the product to the skin and massaging until it is completely absorbed. Remove the cleansing milk cream with sterile sponges or damp cloth. Dry any residual moisture.	10 MIN.
PERFECT TONER	4 Doses	Conclude cleansing by applying Perfect Toner using cotton pads. Make a second application of the product with your hands, tapping the area to be treated.	

Functionality - The first phase of the treatment is aimed to produce a deep cleansing of the skin of the face, making it receptive to the subsequent treatment phases. The active ingredients contained in the products remove impurities, restore the pH and the hydrolipidic film, oxygenate the tissues and give an immediate feeling of well-being and vitality.

Result - The skin of the face will be luminous, velvety to the touch and more receptive to treatment.



RADIANCE PERFECT SKIN

STEP 2

STEP 2: EXFOLIATION

DEEP BUT DELICATE EXFOLIATION THROUGH THE USE OF A POOL OF 7 ACIDS AIMED AT REMOVING DEAD CELLS AND BREAKING KERATOLYTIC BONDS WITH A CONSEQUENT INCREASE IN RECEPTIVITY TO THE ACTIVE INGREDIENTS.



PRODUCTS TO USE	QUANTITY	HOW TO USE	APPLICATION TIME
7ACIDS FACE PEELING	4 Doses	<p>Make sure you have thoroughly dried the skin and apply the 7Acids Face Peeling using a sterile brush starting from the forehead, moving to the contour of the face and, finally, on the cheekbones, neck and décolleté. Leave on for 10 minutes. * Before removing the peeling, massage the product gently. Remove the peeling with moistened cotton pads starting from the orbicular-zygomatic area.</p> <p>* In case of particularly evident spots, after the first 5 minutes, it is recommended to reapply 7Acids Face Peeling locally.</p>	15 MIN.

Functionality - The second phase of the treatment is aimed at thinning the outermost layer of the skin, to facilitate the penetration of the active ingredients contained in the peeling and in the products applied subsequently to enhance the effectiveness of the treatment.

Result - The skin of the face will be hydrated, oxygenated and with a more uniform color. The spots will be less evident, the small wrinkles smoothed and the signs of stress, such as dull complexion and dark circles, reduced.

STEP 3

STEP 3: TREATMENT OF THE IMPACT

AIMED AT THE TREATMENT OF IMPERFECTIONS. ACTIWHITETM ACTS IN THE DEEPER LAYERS OF THE DERMIS BY INHIBITING THE ACTIVITY OF TYROSINASE, GLYCOLIC ACID WORKS AT THE EPIDERMAL LEVEL, LIGHTENING THE STAIN ALREADY FORMED, SNAIL SLIME PROMOTES A PROFOUND CELL RENEWAL.



PRODUCTS TO USE	QUANTITY	HOW TO USE	APPLICATION TIME
RADIANCE PERFECT SKIN SERUM	2 Doses	Dry any residual moisture and apply the Radiance Perfect Skin serum with the help of a brush. Massage lightly to let the product absorb. In case of particularly stubborn pots, make a second application of the serum directly on the area to be treated.	15 MIN.
BOOSTER REGENERATING FACE MASK	1 TNT MASK	Apply the BOOSTER Regenerating Face Mask to snail slime. To avoid wasting the active ingredients left inside the bag, use a brush to apply them on the neck and décolleté. Leave on for at least 10 minutes. In order not to lose contact with your client during the sit time, perform relaxation movements in the areas of the neck, the scalp, the hands and the feet. Those in possession of an oxygen-powered machine will be able to increase the effectiveness of the treatment in the cabin, thanks to the use of the airbrush. Remove the mask and finish by dabbing with your hands, favoring the complete absorption of the product.	

Functionality - Important cellular metabolic stimulus that induces the regularization of melanocytic activity and the synthesis of collagen, elastin and hyaluronic acid.

Result - The skin of the face will be smooth, luminous and compact. Significantly lightened spots, attenuated wrinkles and a redefined profile of the face.

RADIANCE PERFECT SKIN

STEP 4



STEP 4: REBALANCE AND PROTECTION

REBALANCING AND PROTECTIVE TREATMENT, TONES AND RECOMPACTS THE TISSUES, RESTORES THE NORMAL PH AND THE HYDROLIPIDIC FILM, PROTECTING THE SKIN FROM MULTIPLE EXTERNAL AGGRESSIONS, ENHANCING AND MAINTAINING THE EFFECTIVENESS OBTAINED IN STEP 3 OVER TIME.

PRODUCTS TO USE	QUANTITY	HOW TO USE	APPLICATION TIME
RADIANCE PERFECT SKIN CREAM	5 g	Apply the Radiance Perfect Skin cream and perform massage maneuvers to ensure its absorption.	5 MIN.

Functionality - Enhance and maintain the effectiveness obtained with the treatment over time, protecting the skin from the harmful effects of free radicals, air pollution and UV rays.

Result - The skin of the face will be renewed, healthy, luminous and protected.

WE RECOMMEND 6 TREATMENTS ON A WEEKLY BASIS AND THE USE OF RADIANCE PERFECT SKIN SERUM AND CREAM AT HOME FOR THE DURATION OF THE CABIN TREATMENT TO MAINTAIN AND ENHANCE ITS EFFECT. AT THE END OF THE CABIN TREATMENTS, WE RECOMMEND USING RADIANCE PERFECT SKIN SERUM AND RADIANCE PERFECT SKIN CREAM TO PROLONG THE RESULT OBTAINED.



HOME TREATMENT

MAKE THE INTENSIVE SMOOTHING AND ANTI-BLEMISH FACIAL TREATMENT EVEN MORE EFFECTIVE AND PROLONG THE EFFECT OBTAINED IN THE CABIN, USING THE HOME TREATMENT DAILY.



MORNING RADIANCE PERFECT SKIN CREAM 50 ML

Apply a small amount of product to cleansed skin and let it absorb with a light massage.

EVENING RADIANCE PERFECT SKIN SERUM 30 ML RADIANCE PERFECT SKIN CREAM 50 ML

Apply a dose of Radiance Perfect Skin Serum to cleansed skin and massage until completely absorbed. Proceed with the application of the Radiance Perfect Skin cream.



DERMA'AGE



Video and instructions
for use available

Skin-care products
line specially designed
to intensify the
effect produced
by the use of
aesthetic machinery





FACE AND BODY CLEANSING



FACE AND BODY RF TREATMENT



FACE AND BODY BALANCING PHASE

Radiofrequency is an effective and painless method to counteract the signs of aging and other skin blemishes, without creating discomfort and trauma to the tissues. Electromagnetic waves generate an inflow of energy and heat up to the deepest layers of the dermis, reactivating its natural restorative mechanisms thus allowing a real and lasting improvement of the skin of the whole body.

What determines:

- Stimulates basal metabolism of epidermal cells with consequent oxygenation and tissue nutrition and elimination of waste => A compact and luminous skin results.
- Acts directly on the collagen causing a shortening and consequent enlargement up to 30%.
- Stimulates the activity of the fibroblastic membrane, responsible for the production of new collagen, elastin and hyaluronic acid, regenerating the skin tissue => A regenerated, toned, elastic and younger skin results.
- Increases the blood flow with consequent dismantling and elimination of interstitial fluids and waste products and biostimulation of lipocytes. Result => reduction of water retention, orange peel skin, localized adiposity.

Blemishes to be treated:

- Relaxation and loss of skin elasticity • Wrinkles • Acne, scars
- Water retention, orange peel skin, localized adiposity.

DERMA'AGE FACE PROTOCOLS

1 Cleansing

RF Cleansing Milk Aloe Vera Milk	Apply 10ml of Aloe Vera Milk by making circular movements. Remove with a dampened sponge.
RF Cleansing Toner Aloe Vera Water	Tap the area to be treated with a few drops of Aloe Vera Water.
RF Face Peeling Aha	Apply a small amount of product by performing gentle rotary movements. If necessary, remove the residues with a dampened sponge.

2 RF Treatment

Impure Skin and acne in the acute phase

RF Conductive Cream Vitamin E	Mix 10ml of Conductive Cream with 5 drops of Intenser Pure. Apply with a brush on the face, neck, décolleté and breast and treat the area with the RF handpiece.
Intenser Pure	At the end of the treatment any residual of Conductive Cream can be massaged until completely absorbed.

Acne-prone skin in chronic phase and scars

RF Conductive Cream Vitamin E	Mix 10ml of Conductive Cream with 5 drops of Intenser Elastin. Apply with a brush on the face, neck, décolleté and breast and treat the area with the RF handpiece.
Intenser Elastin	At the end of the treatment any residual of Conductive Cream can be massaged until completely absorbed.

Wrinkles premature aging loss of tone

RF Conductive Cream Vitamin E	Mix 10ml of Conductive Cream with 5 drops of Intenser Age. Apply with a brush on the face, neck, décolleté and breast and treat the area with the RF handpiece.
Intenser Age	At the end of the treatment any residual of Conductive Cream can be massaged until completely absorbed.

3 Balancing Phase

Intenser Pure	Apply a few drops of Intenser Pure to the face, neck, décolleté and breast.
Aloe Vera Mask Collagen Aloe Vera	Apply Aloe Vera and Collagen Mask on the face, neck, décolleté and breast, leave to act 10/15 minutes, remove with a dampened sponge.
Aloe Vera Cream Collagen Aloe Vera	Apply the Aloe Vera cream and Collagen on the face, neck, décolleté and breast, massage until completely absorbed.

Intenser Elastin	Apply a few drops of Intenser Elastin on the face, neck, décolleté and breast.
Aloe Vera Mask Collagen Aloe Vera	Apply Aloe Vera and Collagen Mask on the face, neck, décolleté and breast, leave to act 10/15 minutes, remove with a dampened sponge.
Aloe Vera Cream Collagen Aloe Vera	Apply the Aloe Vera cream and collagen on the face, neck, décolleté and breast, massage until completely absorbed.

Intenser Age	Apply a few drops of Intenser Age on the face, neck, décolleté and breast.
Face Mask Hyaluronic Acid	Apply the Hyaluronic Acid Preformed Mask on the face, leave to act 10/15 minutes. Allow the residues to penetrate with a regenerating massage.
Face Cream Hyaluronic Acid	Apply Hyaluronic Acid Face Cream on the face neck décolleté and breast, massage until completely absorbed.

DERMA'AGE BODY PROTOCOLS

1 Cleansing

RF Body Scrub
Aha

Apply the Scrub, energetically massage the areas to be treated. If necessary, remove the residues with a dampened sponge.

2 RF Treatment

Cellulite, water retention, loss of tone, localized adiposity

RF Conductive
Cream
Vitamin E

Mix 10ml of Conductive Cream with 5 drops of Intenser Body Sculpture. Apply the mixture on the area to be treated and work with the RF handpiece. At the end of the treatment any residual of Conductive Cream can be massaged until completely absorbed.

Intenser
Body Sculpture

3 Balancing Phase

Intenser
Body
Sculpture

Apply a few drops of Intenser Body Sculpture combined with a small amount of Intensive Body Sculpture Cream and energetically massage until completely absorbed.

*Intensive
Body
Sculpture
Cream

* To be used also as home-based treatment to intensify and prolong its effect.

Stretch marks, scars, signs of acne

RF Conductive
Cream
Vitamin E

Mix 10ml of Conductive Cream with 5 drops of Intenser Elastin. Apply the mixture on the area to be treated and work with the RF handpiece. At the end of the treatment any residual of Conductive Cream can be massaged until completely absorbed.

Intenser
Elastin

Intenser
Elastin

Apply a few drops of Intenser Elastin combined with a small amount of Intensive Body Sculpture Cream and energetically massage up to complete absorption.

*Intensive
Body
Sculpture
Cream

* To be used also as home-based treatment to intensify and prolong its effect.



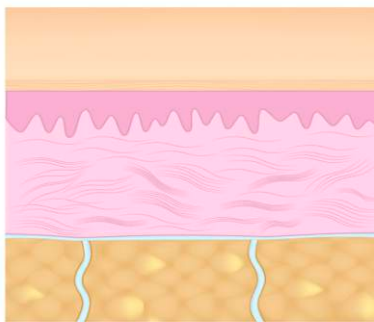


SLIMMING SHOCK EFFECT TREATMENT

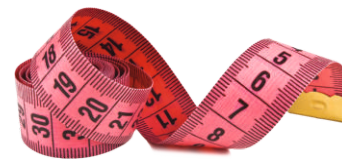
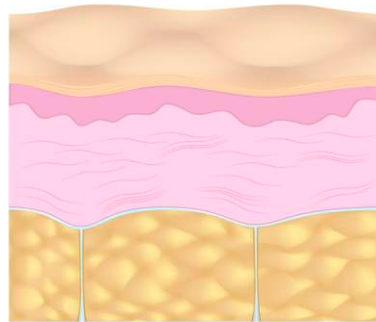
Intensive shaping and slimming treatment based on active phytotherapeutic complexes with high efficacy potential. It acts in a targeted and effective way by attacking the blemish and preserving and / or restoring the skin tone and the female silhouette. Visible and guaranteed results already from the first application!



Normal skin



Skin with cellulite



MEASURABLE RESULT
FROM THE 1ST APPLICATION
* METER INCLUDED



MAXIMUM EFFICACY
IN SHORT TIME



REDUCTION AND TONIFICATION
LEGS HIPS WAIST
FROM THE 1ST APPLICATION



Slimming Treatment Shock Effect

3 WORK STEPS



Exfoliate / Drain / Oxygenate

Deep and functional cleaning of the part to be treated. Microcirculation stimulation and tissue oxygenation. The skin will present immediately smooth and soft to the touch, ready to receive the next phase of treatment.

FUNCTIONALITY: The first phase of OC slimming treatment is directed to the deep cleaning of the part to be treated, making it receptive to the following phases. The phytotherapeutic complex contained in the products stimulates the blood microcirculation by oxygenating the tissues and contributing to the elimination of interstitial fluids.

RESULT: The treated part will be soft to the touch, drained and easier to treat.



Reduce

Functional mask with high reducing potential. The occlusive effect of the pack conveys the highly concentrated phytotherapeutic complex in depth, contributing to the reduction of localized fat deposits.

FUNCTIONALITY: The second phase of OC slimming treatment is aimed at reducing localized fat deposits. The occlusive effect of the functional pack accelerates the absorption in depth of the highly concentrated phytotherapeutic complex, contributing to the reduction of localized adiposity.

RESULT: The volume of the treated parts will be reduced in size and the skin will appear velvety and bright.



Tonify / Elasticize

Toning and elasticizing treatment of the treated part, directed to the compaction of the tissues and the elimination of waste substances.

FUNCTIONALITY: The third phase of the OC slimming treatment is directed to the tonification and elasticization of the tissues of the treated parts, as well as to the elimination of the waste substances produced.

RESULT: The treated part will appear toned, compact and bright. The silhouette modeled and harmonious.



Video and instructions
for use available

PREPARATORY PHASE

- CIRCUMFERENCE MEASUREMENT OF THE PART TO BE TREATED
- STIMULATION OF THE MAIN LYMPHATIC STATIONS OF THE BODY'S UPPER PART: *TERMINUS, OCCIPUT, PROFUNDUS, ANGOLUS, PAROTIS, TEMPORALIS, AXILLARY LYMPHATIC STATION AND CISTERNA CHYLI*, RESPECTING LYMPH RHYTHM.



STEP 1: EXFOLIATE DRAIN OXYGENATE

DEEP AND FUNCTIONAL CLEANSING OF THE PART TO BE TREATED. MICROCIRCULATION STIMULATION AND TISSUE OXYGENATION. THE SKIN WILL BE IMMEDIATELY SMOOTH AND SOFT TO THE TOUCH, READY TO RECEIVE THE NEXT PHASE OF THE TREATMENT.

FIRST STEP - FUNCTIONAL EXFOLIATION

PRODUCT	QUANTITY*	DIRECTIONS FOR USE	APPLICATION TIMES
MULTIFUNCTIONAL SEA CRYSTAL	CRYSTALS 28 G	Mix the Activator, Sea Crystals and Multifunctional Oil to obtain a homogeneous mixture. Apply the product on the area to be treated starting from the ankle to rise towards the inguinal lymphatic station, with circular movements. Perform deep lymphatic drainage maneuvers, proceeding with the correct openings of the lower lymphatic ganglia. Remove with sponge gloves or shower.	20 MIN.
MULTIFUNCTIONAL MASSAGE OIL	ACTIVATOR 15 ML		
	OIL 20 ML		

FUNCTIONALITY - The first phase of OC Slimming Treatment is directed to the deep cleaning of the part to be treated, making it receptive to the subsequent treatment steps. The Phytotherapeutic Complex contained in the products, stimulates the blood microcirculation oxygenating the tissues and contributing to the elimination of interstitial fluids.

RESULT - The treated part will be soft to the touch, drained and easier to be treated.

*Quantity referred to subjects of height 165 cm and weight 60 kgs.



STEP 2: REDUCE

FUNCTIONAL MASK WITH HIGH REDUCING POTENTIAL. THE OCCLUSIVE EFFECT OF THE PACK CONVEYS THE HIGHLY CONCENTRATED PHYTOTHERAPY COMPLEX IN DEPTH, CONTRIBUTING TO THE REDUCTION OF LOCALIZED ADIPOSITIES.

SECOND STEP - REDUCING FUNCTIONAL WRAP

PRODUCT	QUANTITY*	DIRECTIONS FOR USE	APPLICATION TIMES
MULTIFUNCTIONAL SERUM	1 DOSE FOR LYMPHATIC STATION	Apply the Multifunctional Serum on the lower lymphatic ganglia and perform a quick discharge maneuver.	15/20 MIN.
SLIM-FAT REDUCING GEL	30 g	Apply the Multifunctional serum on the lower lymphatic ganglia and, with the help of the Multifunctional Massage Cream, proceed with a connective massage. Apply the Slim-Fat Reducing Gel starting from the ankles to rise with rapid movements towards the inguinal lymphatic station.	
SLIM-FAT REDUCING WRAP	125 ML**	Spread the pack with a brush and leave to work with cartene in thermosauna. Remove with a shower or with sponge gloves.	

*Quantity referred to subjects of height 165 cm and weight 60 kgs. **Each pack of 500ml is meant for 4 treatments.

FUNCTIONALITY - The second phase of OC Slimming Treatment is directed to the reduction of localized adiposity. The occlusive effect of the functional pack accelerates the absorption in depth of the highly concentrated phytotherapeutic complex, contributing to the reduction of localized adiposity.

RESULT - The volume of the treated parts will be reduced in size and the skin will appear velvety and bright.

Slimming Treatment Shock Effect

3 WORK
STEPS



STEP 3: TONIFY ELASTICIZE

TONING AND ELASTICIZING TREATMENT OF THE TREATED PART,
DIRECTED TO THE COMPACTION OF THE TISSUES AND THE ELIMINATION OF WASTE SUBSTANCES.

THIRD STEP - ACTIVE FUNCTIONAL MASSAGE (*OPERATIVE TECHNIQUE OF STIMULATING LYMPH DRAINAGE*)

PRODUCT	QUANTITY*	DIRECTIONS FOR USE	APPLICATION TIMES
MULTIFUNCTIONAL SERUM	1 DOSE FOR LYMPHATIC STATION	Apply the Multifunctional serum on the lower lymphatic ganglia and, with the help of the Multifunctional Massage Cream, proceed with a connective massage**.	15 MIN.
MULTIFUNCTIONAL MASSAGE CREAM	30 ML**		

*Quantity referred to subjects of height 165 cm and weight 60 kgs. **Each pack of 250ml is meant for 8 treatments.

FUNCTIONALITY - The third phase of the OC slimming treatment is directed to the tonification and elasticization of the tissues of the treated parts, as well as to the elimination of the waste substances produced.

** the connective massage contributes to the collagen synthesis, tonifies tissues and compacts the treated parts.

RESULT - The treated part will appear toned, compact and bright. The silhouette modeled and harmonious.

RECOMMENDED N.8 OC SLIMMING TREATMENTS DIVIDED IN THIS WAY:

	IN COMBINATION
● 2 WEEKLY TREATMENTS FOR 3 WEEKS	● OC - HOME SLIMMING TREATMENT - HOME SLIMMING TREATMENT
● 1 WEEKLY TREATMENT FOR 2 WEEKS	● TRATTAMENTO DOMICILIARE SNELLENTI EFFETTO URTO PANCIA PIATTA 2 WEEKS *

* DA APPLICARE SULL'ADDOME, LA SERA PRIMA DEL TRATTAMENTO IN CABINA, PER TUTTA LA NOTTE.



THE PACKAGE ALLOWS 8 PROFESSIONAL TREATMENTS. THE HOME KIT AND BANDAGES ARE SOLD SEPARATELY.

FOR ALL THE DURATION OF TREATMENT IT IS APPROPRIATE TO ADOPT A BALANCED DIET AND TO PERFORM AN ADEQUATE PHYSICAL ACTIVITY.

ALL PRODUCTS OF "OC SLIMMING TREATMENT - SHOCK EFFECT" BY SKIN SYSTEM
RESPECT THE SKIN AND CAN BE SAFELY USED.

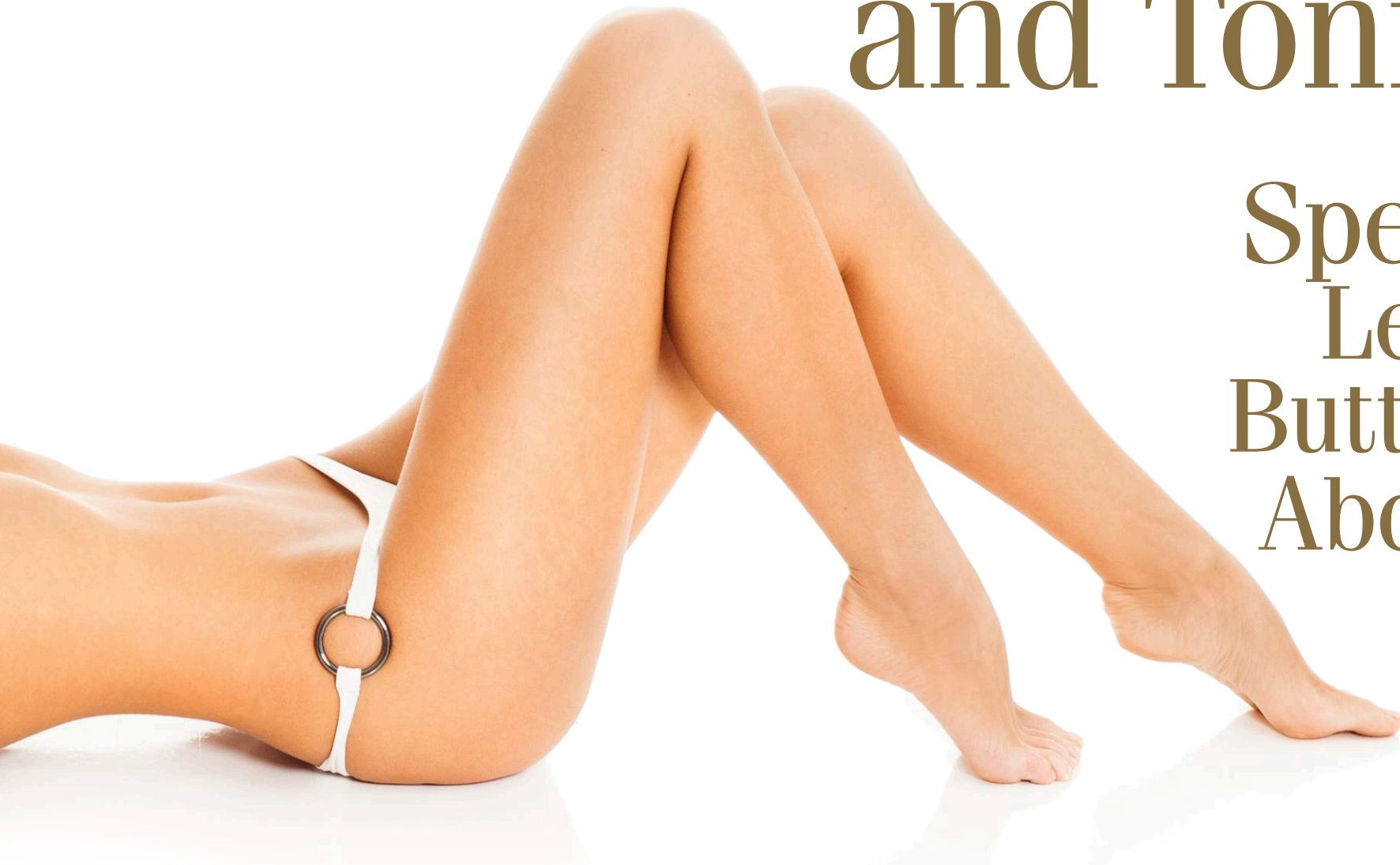
HIGHLY CONCENTRATED PHYTOTHERAPIC COMPLEXES 100% NATURAL.
PARAFFINS, PETROLATUM, PARABENS, ALCOOL, SLESS, SLS AND ANIMALS DERIVATIVES FREE.

ZERO %

PARABENS, PARAFFINUM,
PETROLATUM, SLES, SLS,
ANIMAL DERIVED.

Specific Treatment Draining Relieving and Toning

Special
Legs
Buttocks
Abdomen





Video and instructions
for use available

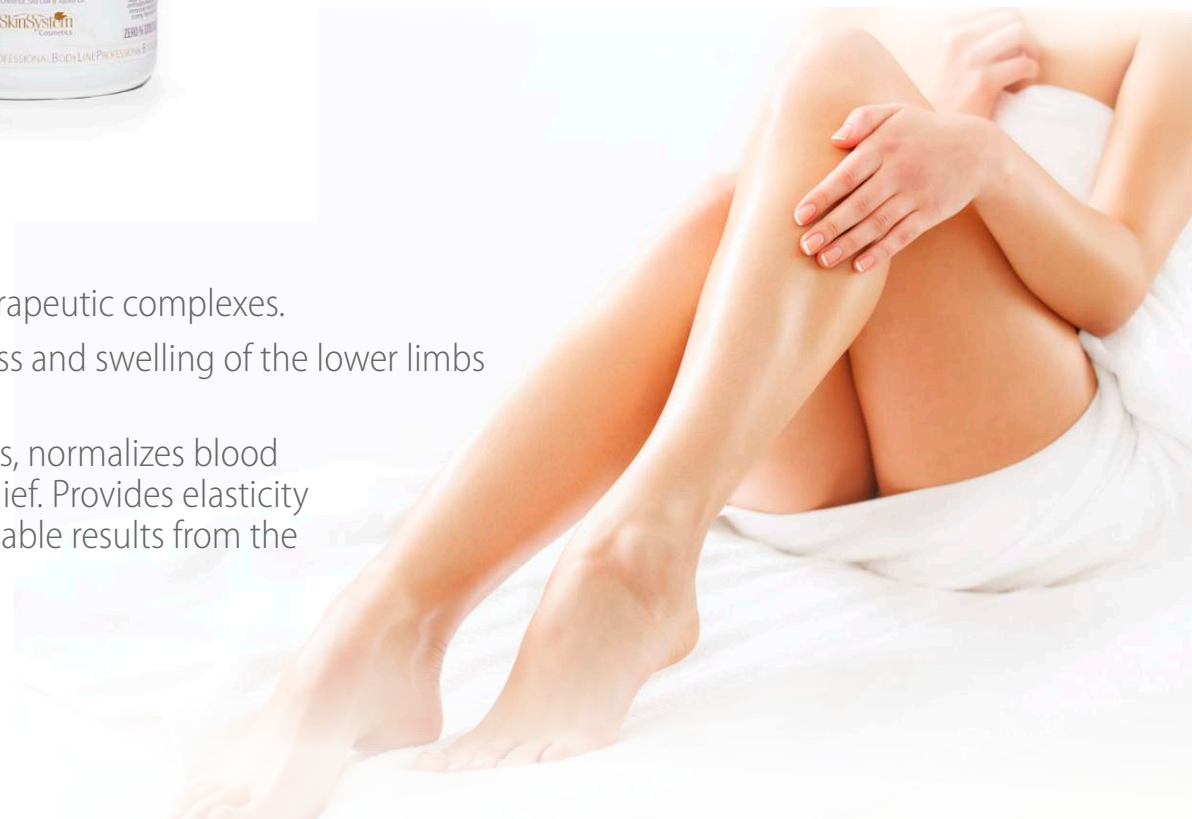
Draining Relieving and Toning Specific Treatment



Intensive treatment based on high potential active phytotherapeutic complexes.

It acts in a targeted and effective way counteracting heaviness and swelling of the lower limbs due to poor circulation, heat or intense sports activity.

It helps the lymphatic system to drain excess fluids and toxins, normalizes blood circulation, giving an immediate feeling of well-being and relief. Provides elasticity and hydration to the skin, leaving it tonic and bright. Appreciable results from the very first applications.



Draining Specific treatment Relieving And Toning Protocol



PREPARATORY PHASE

CONTACT WITH THE CLIENT

STIMULATE THE MAIN LYMPHATIC STATIONS OF THE UPPER PART OF THE BODY: *TERMINUS OCCIPUT PROFUNDUS ANGOLUS PAROTIS TEMPORALIS* AND *AXILLARY LYMPHATIC STATION* AND *CISTERNA CHYLI*, RESPECTING THE RHYTHM OF THE LYMPH.

PRODUCT	QUANTITY*	DIRECTIONS FOR USE
DRAINING SYNERGY	1 DOSE FOR LYMPHATIC STATION	Apply a few drops of product on the lower lymphatic ganglia: inguinal, popliteal, malleolar lymphatic station and the venous insole of Lejars and proceed with opening maneuvers

FUNCTIONALITY - Stimulating the main lymphatic stations has the purpose of freeing any blockages and obstruction of the lymph, allowing its free flow.



EXFOLIATING DRAINING OXYGENATING PHASE

PRODUCT	QUANTITY*	DIRECTIONS FOR USE
DRAINING SEA CRYSTALS	45 g	<p>Prepare the Draining Crystals, pouring the entire contents of the Activator inside the jar containing the Crystals and mix the active ingredients to obtain a homogeneous mixture.</p> <p>Apply the product on the skin with circular movements, starting from the ankle to rise towards the hips, waist and abdomen.</p> <p>Perform deep lymphatic drainage maneuvers to ensure proper limb drainage.</p> <p>Leave the product in heating blanket for at least 10 minutes.</p> <p>Remove the Draining Crystals using sponge knobs.</p>

FUNCTIONALITY - The occlusive effect of the pack causes the active ingredients to penetrate deeply, stimulate the tissues microcirculation and oxygenation and the elimination of waste. The osmotic effect of the salt eliminates excess liquids from the interstitial spaces between cell and cell, counteracting the annoying effects of water retention.



DRAINING PHASE

PRODUCT	QUANTITY*	DIRECTIONS FOR USE
COLD BODY GEL COLD ACTIVATOR GEL	30 g 30 g	Apply the cold gel to the part to be treated and, where necessary, the cold activator gel, starting from the ankle to rise on legs, hips, waist and abdomen with rapid movements.
DRENA-SLIM BODY BANDAGE	2 BANDAGES	Wrap each leg starting from the ankle taking care that the bandage at each turn overlaps of 3/4 cm. The bandage of the right leg should follow the counterclockwise direction, on the left the clockwise direction to respect the direction of the lymphatic collectors. Rise up to the hips, buttocks and abdomen. Leave for 20/30 minutes in cartene. Maintain contact with the client and perform a relaxing massage on the face, scalp and neck. Remove the bandages.

FUNCTIONALITY - It helps the lymphatic system to drain excess fluids and eliminate waste. Stimulates blood circulation by preventing and treating venous insufficiency, causing swelling, heaviness in the legs and ankles, giving elasticity to the vascular walls, thus delaying the onset of the inflammatory phases and their complications.



CELLULAR METABOLISM PHASE

PRODUCT	QUANTITY*	DIRECTIONS FOR USE
DRAINING BODY SYNERGY	1 DOSE FOR LYMPHATIC STATION	Apply the Draining Synergy to the lower lymphatic ganglia and, with the help of the Firming Effect Cream, proceed with a deep drainage massage.
FIRMING EFFECT CREAM	30 ml	N.B: If necessary perform the DLM-Lymphatic Drainage Manual Vodder Method

FUNCTIONALITY - It reactivates blood circulation and lymphatic circulation. A proper lymph and blood flow involves proper oxygenation and nourishment of the cells and an adequate elimination of waste substances. Stimulating the cellular metabolism reduces localized adiposities and drains excess fluids. Effects: The skin will be more toned and elastic, the effect of orange peel attenuated and the body silhouettes will be more harmonious.



HOME TREATMENT

DO NOT FORGET TO GIVE YOUR CLIENT THE HOME KIT TO CONTINUE THE TREATMENT COMFORTABLY AT HOME INTENSIFYING AND / OR EXTENDING THE EFFECTS

PRODUCT	QUANTITY*	DIRECTIONS FOR USE
LIGHT LEGS SPRAY	15 ml	Spray the quantity of product every morning or when necessary on the part to be treated. It absorbs immediately and not greasy. In problematic cases, it is advisable, if possible, to lift the legs for a few minutes after applying the product. Keep the product in the fridge during the summer season.
FIRMING EFFECT CREAM	15 ml	Apply a small amount of product every evening on the part to be treated and let it absorb with a light massage.

* Quantities referring to people of height 165 cm and weight 60 kgs.

Maternity

SkinSystem dermocosmetic line specific for the professional and home treatment of the mother-to-be during and after pregnancy.

Innovative formulas and textures enriched with natural active ingredients without parabens, alcohol, essential oils, petrolatum, paraffin, sulphates, nickel and other heavy metals, specially formulated for the care of the body of the mother-to-be and her baby.



Professional Nourishing/elasticising protocol *

Product	Quantity	How to use
PURE VITAMIN E CONCENTRATE	A few drops	Apply directly to the area to be treated.
SHEA BUTTER and/or SWEET ALMOND OIL	1 nut / 5-10 ml	Apply the product and proceed with the appropriate massage technique.

From the 4th to the 7th month of pregnancy, one cabin treatment every two weeks is recommended, and from the 8th to the end of pregnancy one treatment per week. **

Professional Relaxing/draining protocol *

Product	Quantity	How to use
DRENA GEL	30 g	Apply on the legs with a light massage from bottom to top until completely absorbed.
DRENA BENDAGE	1 / 2 bendage	Wrap around each leg starting from the ankle, taking care that the bandage overlaps by 3/4 cm at each turn. The bandage of the right leg must follow the anticlockwise direction, on the left the clockwise direction. Rise up to the hips and buttocks. Leave to act for 20/30 minutes, wrapping the client in cartene.
SWEET ALMOND OIL	5-10ml	Apply the product and proceed with the appropriate massage technique.

From the 4th to the 7th month of pregnancy, one cabin treatment every two weeks is recommended, and from the 8th to the end of pregnancy one treatment per week. **

* The two protocols can be paired and performed in the same week as needed. ** The protocols can also be performed after pregnancy until the desired result is achieved.



Home treatment

To maintain and enhance the effect obtained, we recommend the home use of the products of the maternity line for the whole duration of the treatment and in the following months.

IN THE MORNING

Pure Vitamin E, Almond Milk

Distribute a few drops of Pure Vitamin E directly on the area to be treated, apply a nut of Almond Milk and perform delicate circular movements until completely absorbed.

IN THE EVENING

Pure Vitamin E, Shea Butter, Sweet Almond Oil 250 ml

Distribute a few pure Vitamin E directly on the area to be treated, apply a nut of Shea Butter or a few drops of Sweet Almond Oil and perform gentle circular movements until completely absorbed.

DRENA GEL: Apply on the legs with a light massage from the bottom upwards until completely absorbed, repeat the application if necessary. In order to enhance the cooling effect, keep the product in the refrigerator.

BREAST GEL OIL: Apply a small amount of product on the area to be treated and massage gently until it is completely absorbed. Repeat the operation at least twice a day or as needed. As a preventive treatment for rhagades: it is recommended to start using the product about 30 days before giving birth to moisturize and protect the nipple and prepare it for breastfeeding. In case of breast rhagades: apply on the nipple and massage gently for a few seconds. It is recommended to apply after breastfeeding, in order to protract the protective action until the next breastfeeding.

PERINEUM OIL: Starting from the 32-34th week of gestation, it is recommended to apply a few drops of oil to the perineal area 2/3 times a week and massage gently for about 5-10 minutes. A slight tingling sensation after application is considered normal. Remove any oil residues with warm water. Do not use in case of early contractions. For more information, consult your midwife.





Bebe Bio

Concentrated Oil from Almond and Coconut 100% natural, to care the baby's and mom's skin.



- Concentrated oil of 100% natural Almond and Coconut, for the care of the skin of the baby and the mother.
- Concentrate of nature without allergens, indicated to pamper and protect the baby's skin from its first days of life and perfect for the mother during breastfeeding.
- Natural raw materials obtained from the cold pressing of ripe seeds of *Prunus Amygdalus Dulcis* and from physical extraction of *Cocos Nucifera* L. oil, followed by a careful refining process that maintain all the characteristics and functional properties unaltered.
- Effective against cradle cap, eczema, rosacea, keratitis, psoriasis, chapping and redness problems.
- Rich in vitamins and 100% natural active ingredients that strengthen the skin against bacterial infections, fungi and viruses.
- *With natural preservatives, without essential oils, allergens, petrolatum, paraffins, silicones, sulphates, alcohol, colorants, nickel and other heavy metals.
- Rich in Vit. E particularly emollient, it helps prevent rhagade and redness on the nipples.

RECCOMENDATION: Used on the baby's skin to cuddle him with sweet massages, it facilitates night rest and calmness. Applied on the little head it counteracts cradle cap. Used on the mom's nipples to prevent rhagades, redness and cracking.

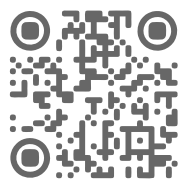
Maternity

Neonatal Massage

How to perform Neonatal Massage

- Perform delicate pressure alternating with small circles on the small foot without forgetting to gently press and turn each little finger and rise up from ankle towards the little leg.
- Proceed with the other little foot and little leg by performing the operation several times.
- Once arrived on the tummy proceed with the hands perpendicular to the body of the baby that will be moved in alternating direction starting from the top to the bottom of the abdomen.
- Then gently place the palm of your hand on the tummy and make circular movements in a clockwise direction starting from the right side of the baby.
- Finally run "the walk" with the fingertips from left to right.
- In a prone position, use your thumbs to make large circles on the baby's bottom to the height of the kidneys, then reducing the circumference by climbing up to the shoulders.
- Then exert pressure with the indexes starting from the neck alternately going down on the shoulders.
- Finally go down with the whole palm of your hand towards the coccyx alternating one hand with the other.
- Repeat the movement several times.





CATALOGUES



Registered offices and Headquarters:
Via G. Montanelli, 41/43 – 61122 Pesaro - Italy
Tel: +39 0721 415707 - 415193 Fax: +39 0721 454428
export@skinsystem.it - www.skinsystem.company - www.skinsystem.it



SkinSystem



SkinSystem_official



SkinSystem

